

# Windows XP Setup Instructions

Once you have verified that your modem is compatible and has been properly setup, follow these steps to set up your new Widomaker High Speed DSL Connection!

1. Go to **Start > Control Panel**.

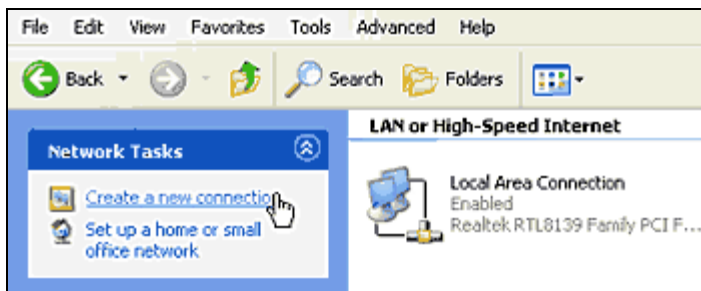


2. Double-click **Network Connections**.



3. Double-click **Create a new connection**.

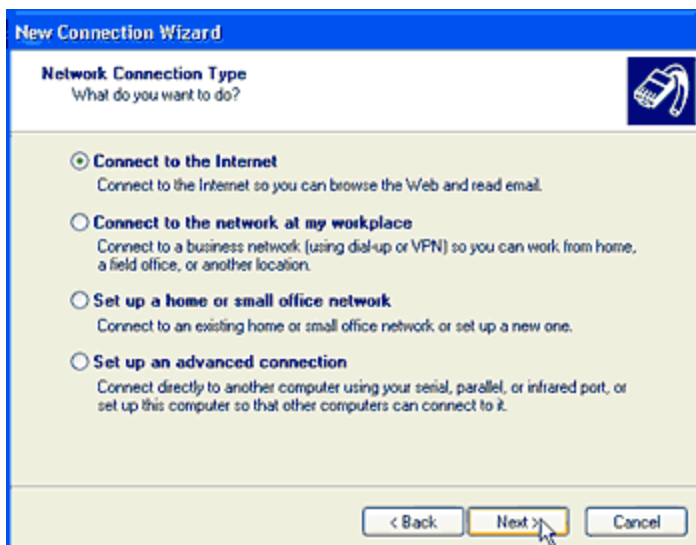
If you're prompted with a **Location Information** box, enter your area code in the field labeled "What area code (or city code) are you in now" and click **OK**.



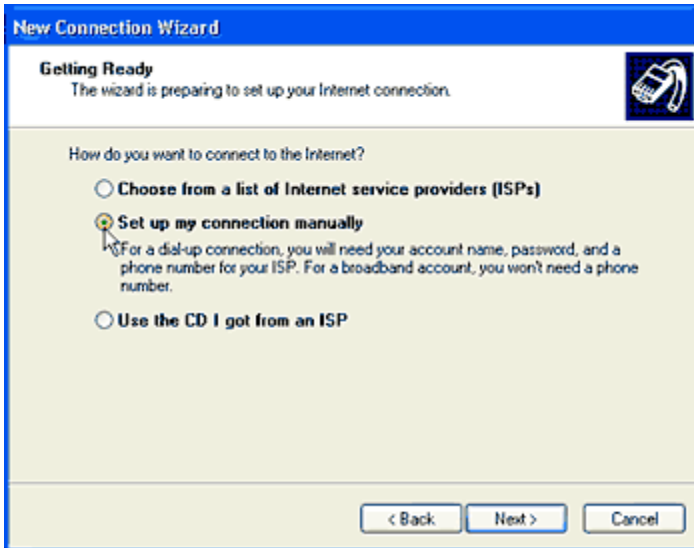
4. The Network Connection Wizard will now appear. Click **Next**.



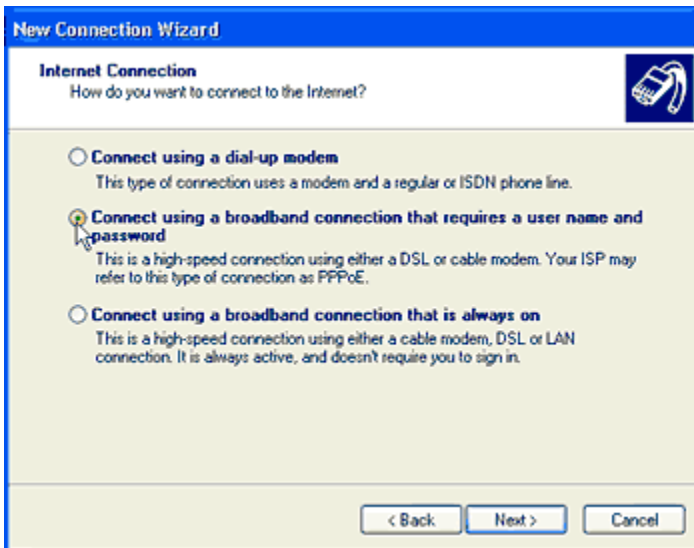
5. Select **Connect to the Internet**, then click **Next**.



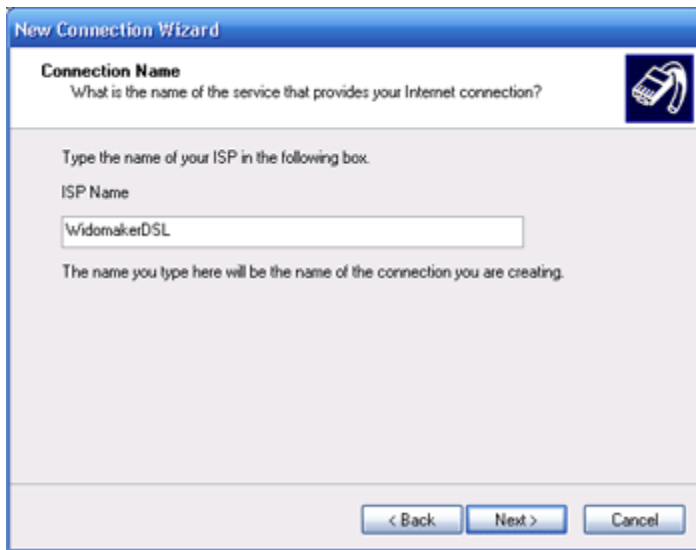
6. Select **Set up my connection manually**, then click **Next**.



7. Select **Connect using a broadband connection that requires a user name and password**, then click **Next**.



8. Type "WidomakerDSL" in the field and click **Next**.



The screenshot shows the 'New Connection Wizard' window. The title bar reads 'New Connection Wizard'. The main heading is 'Connection Name' with a sub-question: 'What is the name of the service that provides your Internet connection?'. Below this, it says 'Type the name of your ISP in the following box.' and 'ISP Name'. A text input field contains 'WidomakerDSL'. A note below the field states: 'The name you type here will be the name of the connection you are creating.' At the bottom, there are three buttons: '< Back', 'Next >', and 'Cancel'.

9. Enter the registration User name and Password as shown below.  
User name: **DSLNUMBER@value.net**  
Password: **(You should know this!)**



The screenshot shows the 'New Connection Wizard' window at the 'Internet Account Information' step. The title bar reads 'New Connection Wizard'. The main heading is 'Internet Account Information' with a sub-question: 'You will need an account name and password to sign in to your Internet account.' Below this, it says 'Type an ISP account name and password, then write down this information and store it in a safe place. (If you have forgotten an existing account name or password, contact your ISP.)'. There are three text input fields: 'User name:' containing 'DSLNUMBER@value.net', 'Password:' containing seven dots, and 'Confirm password:' containing seven dots. Below the fields are three checked checkboxes: 'Use this account name and password when anyone connects to the Internet from this computer', 'Make this the default Internet connection', and 'Turn on Internet Connection Firewall for this connection'. At the bottom, there are three buttons: '< Back', 'Next >', and 'Cancel'. A mouse cursor is pointing at the 'Next >' button.

10. The Setup process is finished. Place a check under **Add a shortcut to this connection to my desktop**. Click **Finish**.



11. The connection box will appear. Click **Connect** to access the Internet.

