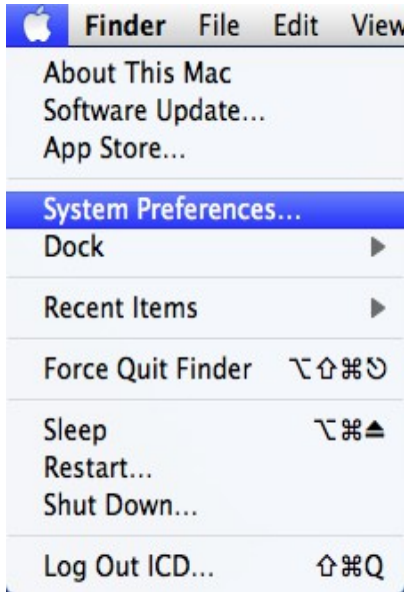


# Mac OS X

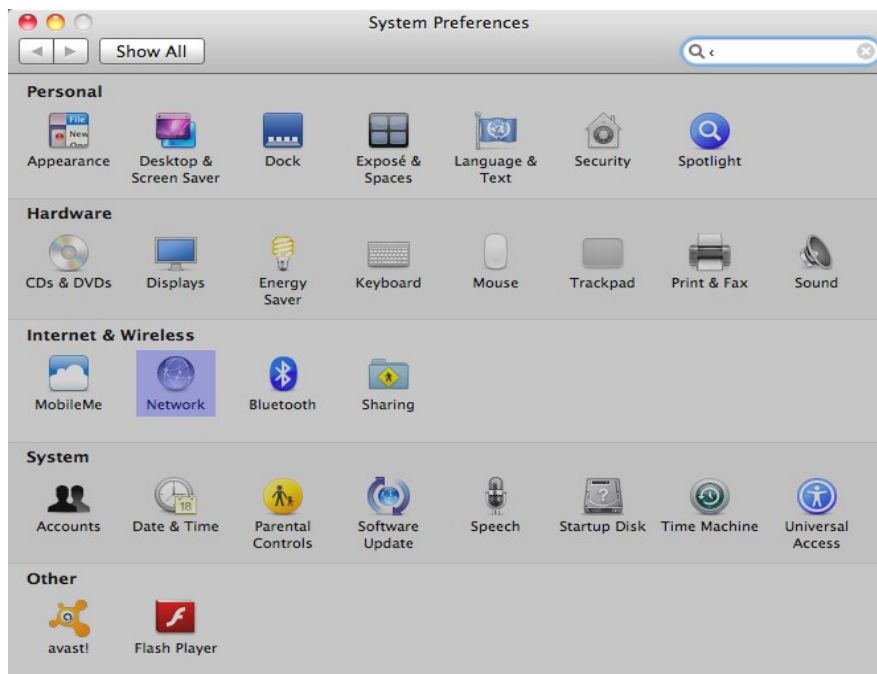
## OS X ADSL PPPOE connection

### Configuring PPPoE connection on OS X:

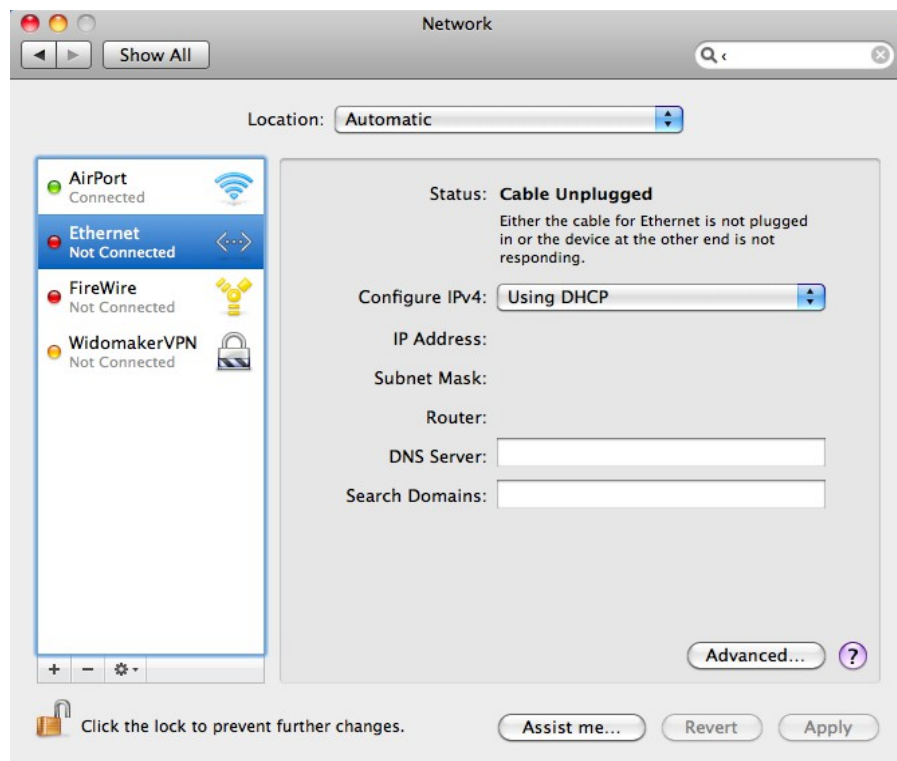
1. Inside the Apple menu, choose System Preferences.



2. Click on the Network icon.

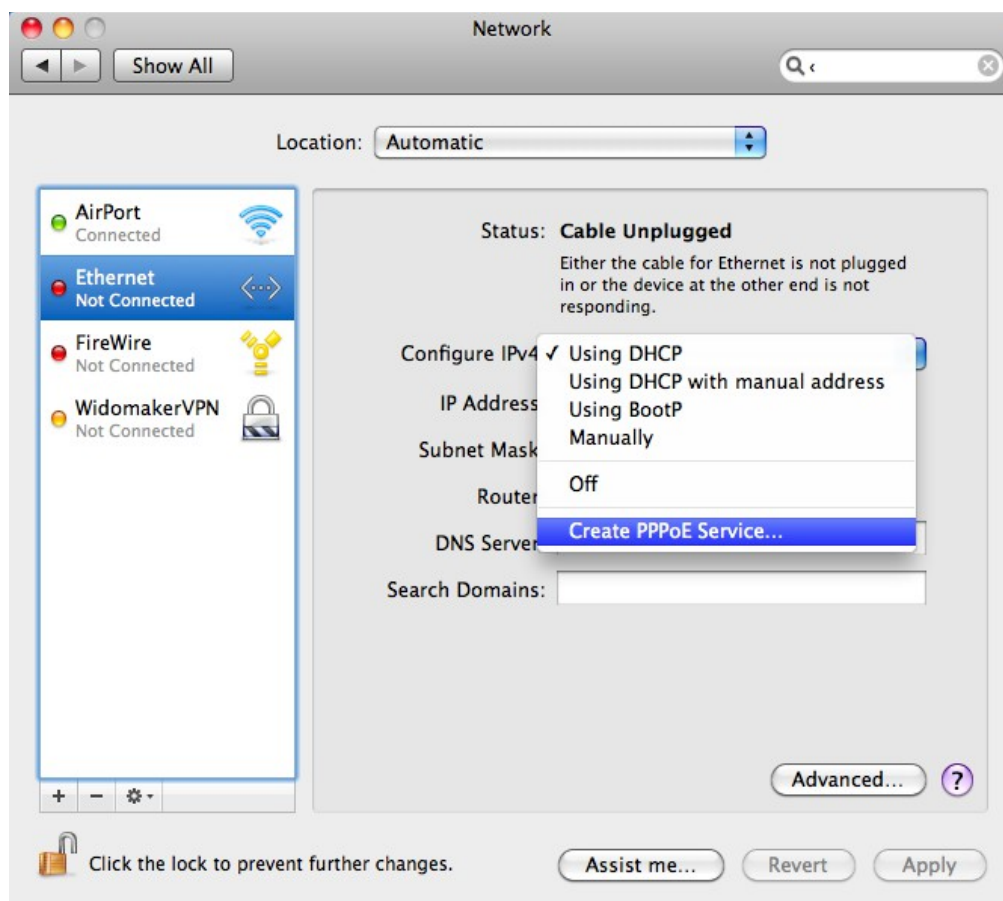


3. On the left side, click Ethernet.

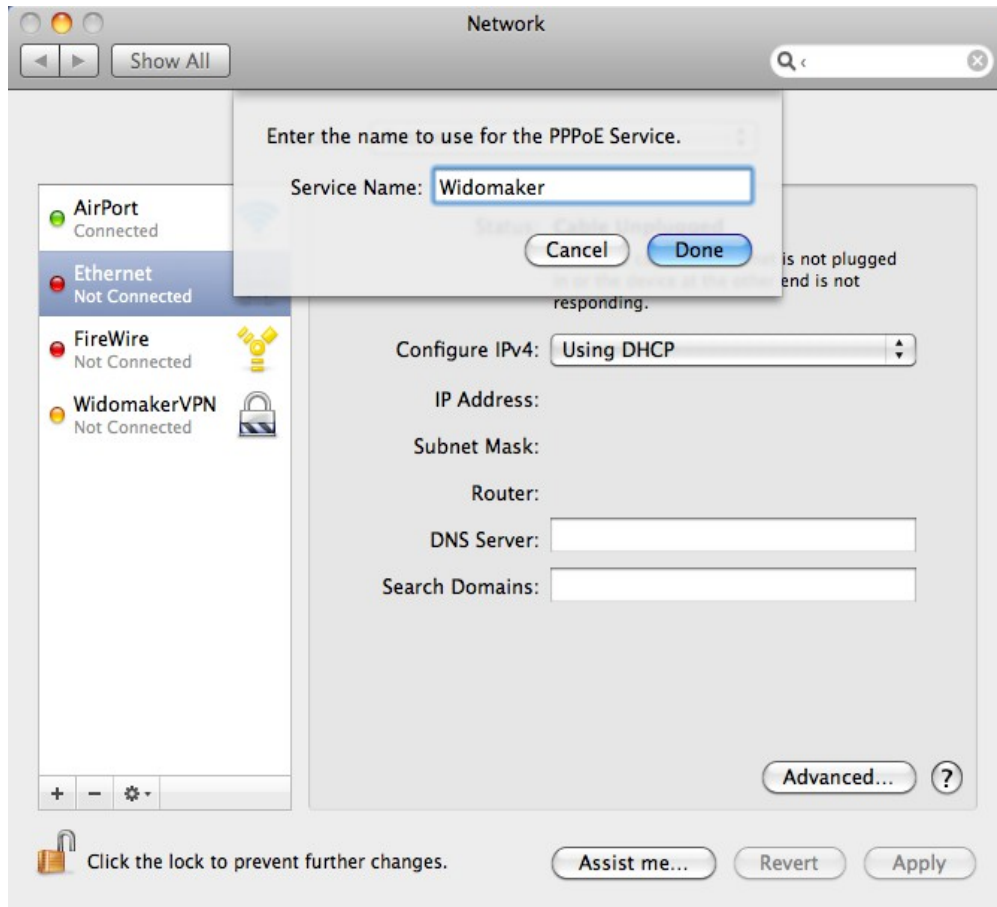


4. Click Configure IPv4: Dropdown Menu.

5. Choose, Create PPPoE Service.



6. Enter the name Widomaker.
7. Click Done.



8. Enter in your account name. (It's formatted with your DSL Number i.e. 7575551212 followed with "@value.net" in all lower case lettering.)
9. Enter your password.
10. Place a check mark in Remember Password.
11. Place a check mark in Show PPPoE status in menu bar.
12. Click Apply.
13. Click Connect.
14. Close the Window.

You will see the following timer show up in your menu bar.



From here, you can disconnect or reconnect as you like.